

# **HERITAGE**<sup>TM</sup> MANUFACTURING CO.



## **92** INSTRUCTION MANUAL

### **GENERAL SAFETY, OPERATING INSTRUCTIONS AND LIMITED WARRANTY**

#### **READ CAREFULLY BEFORE USING YOUR FIREARM**

**Important:** Keep this manual with your firearm.

The information contained in this manual is useful, both for beginners and experienced shooters. In addition to important information about the function, cleaning, and care of the firearm, the manual contains instructions that will be very helpful in shooting safety. The most important rule of safe firearm handling is always keep the muzzle pointed in a safe direction.



# 92

HeritageMfg.com



/heritagemfg



@heritagemfginc



/heritagemfg

# CONTENTS




Firearm Safety.....	5
Get To Know Your Rifle .....	8
Ammunition .....	10
Operating Instructions.....	12
Care and Maintenance.....	20
Exploded View .....	22
Heritage Service Policy .....	24
Limited Warranty .....	26



## WARNING

The safety warnings in this booklet are important. By understanding the dangers inherent in the use of any firearm, and by taking the precautions described herein, you can safely enjoy your Heritage™ firearm. Failure to follow any of these warnings could result in serious injury to you or others, as well as severe damage to the firearm or other property.

# SIGNAL WORDS AS DEFINED BY ANSI Z535.6 AND Z535.4 STANDARDS.

 <b>DANGER</b>	DANGER indicates a hazardous situation which, if not avoided, will result in death or serious injury.
 <b>WARNING</b>	WARNING indicates a hazardous situation which, if not avoided, could result in death or serious injury.
 <b>CAUTION</b>	CAUTION indicates a hazardous situation which, if not avoided, could result in minor or moderate injury.
<b>NOTICE</b>	NOTICE is used to address practices not related to physical injury.

## FIREARM SAFETY

 **DANGER**

When a firearm discharges, the bullet or shot can strike a person, resulting in death or serious bodily injury.

The three basic keys to safe handling of firearms:

- 1. KEEP YOUR FINGER OFF THE TRIGGER UNTIL YOU ARE READY TO FIRE.** If you maintain good trigger discipline, it is extremely unlikely the firearm will fire.
- 2. KEEP THE MUZZLE POINTED IN A SAFE DIRECTION.** Even if the firearm discharges, if the muzzle is pointed in a safe direction, no one will be injured.
- 3. NEVER TRUST ANY SAFETY MECHANISM.** If you adopt the attitude that you will not trust any safety mechanism, you will be vigilant about keeping your finger off the trigger and keeping the muzzle pointed in a safe direction.

 **WARNING - KNOW YOUR TARGET**

Never fire at targets at close range. Ricochets can and do cause death or serious bodily injury. What constitutes "close range" depends on many factors including target material, bullet caliber and angle of impact.

**KNOW WHAT IS BEHIND YOUR TARGET.** Unless you are shooting into a bullet trap designed to capture the type of ammunition you are firing, projectiles may pass through the target and strike anyone or anything beyond. Bullets can travel miles.

**ALWAYS WEAR HEARING PROTECTION.** Firearms are loud. The sound they generate is greater indoors. Repeated exposure to loud noises can cause deafness. Hearing protection is rated by decibel reduction. Look for “dB” reduction of 30 or more when purchasing ear protection. Modern ear protection can allow normal hearing until the sound from the discharge reaches the ear. Significant protection can be achieved by layering hearing protection, for example, wearing 30dB rated foam plugs along with 20dB rated ear muffs.

**ALWAYS WEAR EYE PROTECTION.** In normal operation, firearms emit hot high-velocity gases, particles and metal. These materials flying into your eye can cause blindness. Protect your vision with proper eye protection. Any eye protection may be better than none, but look for ANSI Z87.1-2003 certified eyewear for the best protection.

**NEVER HANDLE FIREARMS WHILE UNDER THE INFLUENCE OF DRUGS OR ALCOHOL.** Firearms are dangerous. Handling firearms while impaired by drugs or alcohol is foolhardy and can result in serious injury or death. This warning includes prescription drugs that contain a warning about using machinery or driving while taking the medication.

**MODIFIED FIREARMS ARE DANGEROUS, AND USE CAN RESULT IN SERIOUS INJURY OR DEATH.** “Trigger jobs,” polishing original components or installing aftermarket parts can cause a firearm to function in ways different than intended. Some such work may also be illegal.

**DAMAGED FIREARMS ARE DANGEROUS, AND USE CAN RESULT IN SERIOUS INJURY OR DEATH.** Repairs should always be made by a qualified gunsmith or by a factory-authorized repair site. Work done by those unfamiliar with the design can cause a firearm to function in ways different than intended.

**NEVER ATTEMPT TO DISASSEMBLE OR CLEAN A LOADED FIREARM. DOING SO CAN RESULT IN SERIOUS BODILY INJURY OR DEATH.** How often have we heard “But it went off while I was cleaning it!” or, “I did not know it was loaded!” or, “It was jammed, and I tried to take it apart!”?

**IF A FIREARM GOES OFF, THERE WAS A ROUND OF AMMUNITION IN THE CHAMBER.** Period. “Clear” (or empty) the firearm of all ammunition before disassembling or cleaning.

As owner of your new Heritage Firearm, you are responsible for: (1) Keeping your finger off the trigger; (2) Pointing the muzzle in a safe direction; (3) Removing ammunition from the firearm; and (4) Looking and feeling in the chamber to confirm the firearm is empty. An empty (unloaded) firearm cannot fire.

## FIREARM SAFETY SYSTEMS

Firearm safety is supported by a system. With your rifle, the system is made up of the following:

**1. You!** Your involvement in safety cannot be overemphasized. No safety component can keep your finger off the trigger and the muzzle pointed in a safe direction. Also, you are the key to never trusting any of the mechanical parts of the safety system.

**2. Manual Safety.** Always use the manual safety. The manual safety button is located at the rear of the receiver and must be manually pressed to the desired position.

**3. Trigger Guard.** This is a physical obstruction that helps prevent unintended pressing of the trigger. Do not modify the trigger guard.

**4. This Manual.** Use this manual to learn about your rifle and to help you use your rifle safely. If you use the manual, you will be a long way toward being a knowledgeable and safe firearms owner.

**5. Online Resources.** [Heritagemfg.com](http://Heritagemfg.com) hosts a library of videos concerning safety and related issues. This library is being supplemented and revised. Please visit the site and take advantage of what is available there as part of your education regarding using your rifle in a safe fashion.

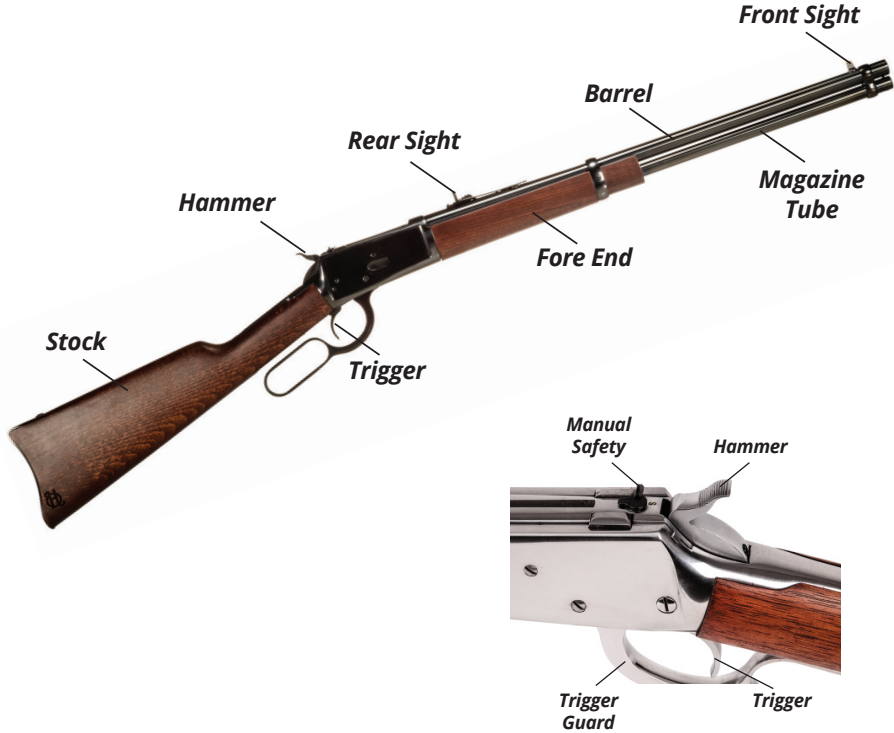


*Manual Safety ON*



*Manual Safety OFF*

# GET TO KNOW YOUR RIFLE



# FIREARMS STORAGE AND GUN LOCKS

How you secure your firearm is a personal choice based on the unique circumstances in your home, business or vehicle and the laws of the state where your firearm is located. Any choice you make about securing your firearms will present advantages and disadvantages. You must weigh those advantages and disadvantages and choose which security method is best for you and those around you.



## ! WARNING - LOCKING

Never lock a loaded firearm. Unlocking a loaded firearm makes it more difficult to maintain trigger discipline and to keep the muzzle pointed in a safe direction.


## ! WARNING

Securing your firearm may inhibit access in a defensive situation and may result in injury or death.


## ! WARNING

Failure to secure a firearm may result in injury or death. Properly securing a firearm means storing your firearm unloaded and securely locked, with all ammunition in a separate location.

AMMUNITION

**WARNING**

Using the wrong ammunition in your rifle can result in serious bodily injury and damage to your rifle. Make certain the ammunition you load is the same caliber as is marked on the rifle.

**WARNING - AMMUNITION AND INDUSTRY STANDARDS**

Use only clean, dry factory-loaded ammunition. Old, damaged, wet or oily ammunition may fire at pressures higher than industry standard, causing injury to you and bystanders or damage to your rifle.

Do not use reloaded ammunition in your rifle. Its firing pressures are unknown and may well exceed industry standard, causing injury to you and bystanders or damage to your rifle.

Odd sounds are signs of trouble. If a round “does not sound right” when it goes off, stop firing right away. A bullet may be stuck in the barrel. Firing the rifle in this condition will cause injury to you and bystanders or damage to your rifle.

If you hear any odd sounds when shooting, stop firing immediately. If there is any reason to suspect that the barrel is obstructed, immediately unload the firearm and make it clear. Visually inspect the bore for blockage. It is not sufficient to merely look in the chamber. The bullet may be lodged in the barrel where it cannot be easily seen. If you do not see light when inspecting the bore, something is stuck in the barrel. Do not fire the rifle again and take the rifle to a qualified gunsmith or contact the Heritage Service Department at 229-210-2666 or 800-845-3776.

**WARNING**

If the bore is obstructed, DO NOT attempt to shoot it out by using another cartridge or by blowing it out with a blank. Such techniques can generate excessive pressure, damage the firearm and cause serious injury.

The use of reloaded, “remanufactured,” hand-loaded, or other nonstandard ammunition voids all warranties. Improperly loaded ammunition voids all warranties. Improperly loaded ammunition can be extremely dangerous. Severe damage to the firearm and serious injury to the shooter or to others may result. Always use ammunition that complies with the industry performance standards established by the Sporting Arms and Ammunition Manufacturers Institute, Inc., (SAAMI).

**WARNING - LEAD AND HAZARDOUS CHEMICAL EXPOSURE**

Discharging firearms in poorly ventilated areas, handling, and /or cleaning firearms or handling ammunition can expose you to chemicals including lead which is known to the state of California to cause cancer and birth defects or other reproductive harm. For more information, go to [www.P65Warnings.ca.gov](http://www.P65Warnings.ca.gov)

Have adequate ventilation at all times. Wash hands thoroughly after exposure with soap and water.

**SHOOTING OR CLEANING GUNS MAY EXPOSE YOU TO LEAD**

## OPERATING INSTRUCTIONS

Your rifle is equipped with a manual safety. Use it!

### MANUAL SAFETY



*Manual Safety ON*



*Manual Safety OFF*

### WARNING

Your firearm is equipped with the manual safety shown above. A manual safety is no substitute for safe, smart firearm handling.

THE MANUAL SAFETY IS LOCATED ON THE TOP REAR OF THE RECEIVER. TO ENGAGE THE MANUAL SAFETY, ROTATE IT FULLY COUNTER CLOCKWISE SO THAT THE RED DOT IS COVERED. THE MANUAL SAFETY LEVER CAN BE ROTATED COUNTER-CLOCKWISE TO THE SAFE POSITION WHEN THE HAMMER IS IN THE REARMOST FULLY COCKED POSITION OR IS IN THE HALF-COCKED POSITION. Half-cocked is a position between the rest and the fully cocked positions. To reach the half-cocked position, slowly pull the hammer from its rest position till you hear a click.

Note: when the hammer is half-cocked, the trigger is blocked and cannot be activated. This position is no substitute for the manual safety nor for safe, smart firearm handling.

To disengage the manual safety, rotate it clockwise to expose the red dot. The manual safety can be disengaged with the hammer in the rest position or fully cocked.

**KEEP THE MANUAL SAFETY IN THE SAFE POSITION UNTIL YOU ARE READY TO SHOOT.**



*Hammer on the rest position*



*Hammer on the halfcocked position*



*Hammer fully cocked*

## DE-COCKING

If you want to safely de-cock the hammer from the fully cocked position, engage the manual safety (red dot covered), and keeping the muzzle pointed in a safe direction, hold and control the hammer with your thumb, pull the trigger, then slowly and carefully let the hammer move forward a bit, then release the trigger. Continue moving the hammer downward slowly until it reaches the half-cocked position.

### WARNING

You should practice this method with an empty firearm until you are completely familiar and comfortable with this procedure.



*Gun being loaded through the loading port*

This firearm must be loaded through the loading port located on the right side of the receiver. The loading port is covered by a loading gate. With the muzzle pointed in a safe direction, make sure that the hammer is in the rest position and the finger lever is in its rest position (action fully closed, finger lever close to the lower tang). Slowly and carefully push the cartridge against the loading gate to make it open and keep pushing the cartridge until it is completely inside the receiver. It is possible to load the firearm with any quantity of cartridges from one up to the maximum allowed on each model.

**If a cartridge is stuck in the chamber and you are unsure if it fired or not:** Keep the muzzle pointed in a safe direction. Treat it as a live round and handle in accordance with “what to do if firearm fails to fire” on page 19.

### WARNING

The danger of personal injury or death associated with cartridges, fired or unfired, becoming stuck in a firearm can be avoided by using new, clean, factory loaded ammunition and never forcing ammunition into a chamber. If you have to force ammunition into the chamber, something is wrong! Stop! And take the rifle to a qualified gunsmith.

### WARNING - ANY GUN MAY FIRE IF DROPPED

If dropped or struck, the rifle may fire. Keep the chamber empty unless actually firing!

### WARNING

If dropped or struck the firearm should be inspected by a trained armorer/gunsmith for a complete function check. After the firearm was dropped or struck, it may not function as intended resulting in accidental death or serious injury.



## ADJUSTING SIGHTS

1. Ensure the firearm is unloaded. Keep the muzzle pointed in a safe direction.
2. Elevation Adjustment: To adjust elevation on the rear sight, pull the rear sight upward using one hand, and with the other hand, move the elevator forward to make the sight shorter or rearward to make the sight taller. The taller you set the rear sight, the higher the point of impact will be.
3. Windage Adjustment: To adjust the windage, simply move the front sight left or right by tapping it carefully using a brass punch and a hammer. (If the point of impact is left of the target, move the front sight to the left. If the point of impact is right of the target, move the front sight to the right.)



*Elevation Adjustment*



*Windage Adjustment*

## TO FIRE



### WARNING

Always be sure the firearm is pointed at the target and away from other people, buildings and vehicles before firing. Do not fire into water. When finished shooting, immediately set the manual safety to the safe position (red dot covered).

With the gun pointed at the target and the magazine tube loaded, swing the finger-lever forward then back. This movement will chamber a cartridge and make the action ready for shooting. The gun is now loaded and cocked.

With the action completely closed, aim at the target (carefully read all warnings and instructions in this manual), set the manual safety to the fire position (red dot exposed) and then pull the trigger. If you wish to continue shooting, keep the muzzle on target and swing the finger lever forward to eject the now empty cartridge then pull the finger lever back to load another cartridge from the magazine.



*Swinging the Finger-Lever*



*Firearm loaded, cocked  
and ready to fire*



*Manual Safety ON*



*Manual Safety OFF*

## **WARNING**

Keep your finger off the trigger when cycling the finger lever. Keep the manual safety in the safe position until you are on target. Failure to do so can result in accidental death or serious injury.

## **UNLOADING YOUR FIREARM**

If you want to unload your firearm without shooting: set the manual safety on (red dot covered) and then repeatedly cycle the finger-lever forward and back **WITHOUT PULLING THE TRIGGER** to eject the unfired cartridges. Do this until the firearm is empty (no cartridges come out after swinging the lever-finger).

## **WARNING**

Always make sure the breech bolt will open in a safe direction and that the unfired cartridges will fall on a safe place. Cartridges ejecting from the chamber can cause injury. **ALWAYS INSPECT THE CHAMBER AND MAGAZINE CAREFULLY TO MAKE SURE THERE ARE NO CARTRIDGES LEFT IN THE FIREARM.**

## **WHAT TO DO IF FIREARMS FAILS TO FIRE**

1. Misfires – If you press the trigger and the hammer falls, but the cartridge does not fire, remain in the shooting position and wait a minimum of 30 seconds. Then, cycle the lever-finger as previously described. This will eject the misfired cartridge from the gun.
2. Underpowered cartridge – An underpowered cartridge is unusual if the ammunition is fresh, clean, and factory loaded. However, if you hear an unusual sound or low report, you should stop shooting immediately, keep muzzle pointed in safe direction and wait a minimum of 30 seconds. Then unload the firearm and check visually, both the chamber and bore to make sure there is no obstruction.

## CARE AND MAINTENANCE



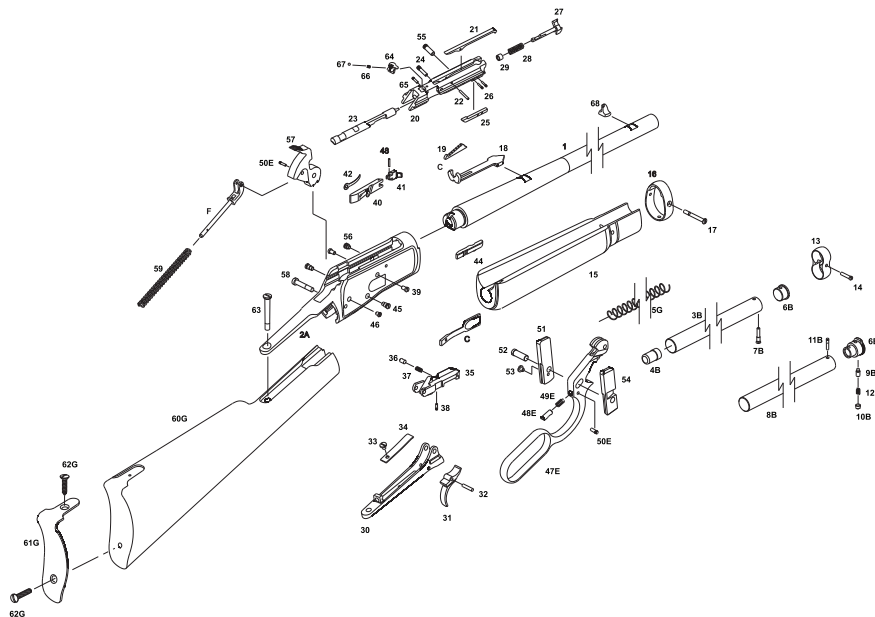
### WARNING

Before cleaning: (1) Keep your finger off the trigger; (2) Point the muzzle in a safe direction; (3) Remove ammunition from the firearm; and (4) Look and feel in the chamber to confirm the firearm is empty. An empty (unloaded) firearm cannot fire.

1. The firearm may be cleaned and lubricated under normal conditions without the need of any disassembly. Do not disassemble the barrel.
2. When disassembly is necessary, such as repair, the firearm should be returned to the factory or sent to a qualified gunsmith.
3. To keep a gun in good condition, it must be kept clean and covered with a light film of good quality gun oil to prevent corrosion. This is especially necessary after use.
4. For normal cleaning of a firearm not used or kept in storage for some time, rub it with a lightly oiled cloth. In the same way, proceed with the bore of the barrel. The barrel should be clean and left free of debris. All excess oil must be removed, but a thin protecting film should remain. Dust should be removed from all crevices with a small, clean plastic brush.
5. For cleaning after shooting, all powder residues should be removed from the barrel and other adjacent areas subject to such deposits with an appropriate brush. If particles of lead are detected in the barrel, they must be scrubbed with a brass brush drenched with solvent. Once cleaned, lubrication should be done as described above. When shooting more than 200 rounds in a single outing, your firearm should be cleaned before further shooting.
6. Do not keep firearms in contact with materials that attract moisture or possess a certain degree of acidity, or in environments with great variation of temperature or of humidity. Avoid the use of cloth holsters or any other moisture retaining material.
7. If the firearm is to be stored for a long period of time, care should be taken with metal surfaces in order to protect them against corrosion.

*Intentionally left blank*

## EXPLODED VIEW



## PART LIST

1	BARREL	31	TRIGGER	G	STOCK ASSEMBLY
2	RECEIVER	32	TRIGGER PIN	60-G	STOCK
A	RECEIVER ASSEMBLY	33	TRIGGER SPRING SCREW	61-E	BUTT PLATE
B	MAGAZINE ASSEMBLY	34	TRIGGER SPRING	62-E	BUTT PLATE SCREW
3-B	MAGAZINE TUBE OUTSIDE	35	CARRIER	63	UPPER TANG SCREW
4-B	MAGAZINE FOLLOWER	36	CARRIER STOP	64	LOCKING LEVER
5-B	MAGAZINE SPRING	37	CARRIER STOP SPRING	65	LOCKING PIN
6-B	MAGAZINE PLUG	38	CARRIER STOP PIN	66	LOCKING SPRING
7-B	MAGAZINE PLUG SCREW	39	CARRIER SCREW	67	LOCKING BALL
8-B	MAGAZINE TUBE INSIDE	40	CARTRIDGE GUIDE, LEFT	68	FRONT SIGHT
9-B	MAGAZINE PLUG SLIDE PIN	41	CARTRIDGE STOP		
10-B	MAGAZINE PLUG SCREW	42	CARTRIDGE STOP SPRING		
11-B	MAGAZINE PLUG STOP PIN	43	CARTRIDGE STOP PIN		
12-B	MAGAZINE PLUG SLIDE PIN SPRING	44	CARTRIDGE GUIDE, RIGHT		
13	FRONT BAND	45	CARTRIDGE GUIDE SCREWS		
14	FRONT BAND SCREW	D	COMPLETE SPRING COVER		
15	FOREARM	46	SPRING COVER SCREW		
16	REAR BAND	E	FINGER LEVER ASSEMBLY		
17	REAR BAND SCREW	47-E	FINGER LEVER		
18	BUCKHORN REAR SIGHT	48-E	FRICTION STUD		
C	COMPLETE REAR SIGHT	49-E	FRICTION STUD SPRING		
19	ELEVATOR	50-E	FRICTION STUD STOP PIN		
20	BREECH BOLT	51	LOCKING BOLT, LEFT		
21	EXTRACTOR	52	LOCKING BOLT PIN		
22	EXTRACTOR PIN	53	LOCKING BOLT PIN STOP SCREW		
23	FIRING PIN	54	LOCKING BOLT, RIGHT		
24	FIRING PIN STOP PIN	55	LEVER & BREECHBOLT PIN		
25	EJECTOR SPRING STOP	56	L & B PIN HOLE PLUG SCREW		
26	EJECTOR SPRING STOP PIN	57	HAMMER		
27	EJECTOR	F	MAIN SPRING ROD		
28	EJECTOR SPRING	58	HAMMER SCREW		
29	EJECTOR COLLAR	59	MAIN SPRING		
30	LOWER TANG				

## HERITAGE MANUFACTURING, INC. SERVICE POLICY

Should your firearm require adjustment or repair, contact our Customer Care department at 229-210-2666 or 800-845-3776.

Please follow these suggestions to expedite service in the United States to return any firearm to us for adjustment or repair.

1. Federal law permits you to return your firearm to the manufacturer for service via common carriers. However, state and local firearms laws vary greatly; you should consult your local prosecuting attorney regarding any restrictive laws in your jurisdiction regarding your shipment or receipt of firearms. With the above in mind, it is strongly recommended that any firearm sent to us for repair be sent through a federally licensed dealer.
2. All firearms must be shipped to us prepaid. WE WILL NOT ACCEPT COLLECT SHIPMENTS.
3. Be sure to enclose a letter stating your name, address and telephone number as well as serial number, caliber and barrel length of your firearm. Also state the nature of trouble experienced or work required. Merely stating “defective” or “repair as necessary” is inadequate information. Be specific and enclose copies of any previous correspondence. Work (other than warranty repair) will bear minimum labor charge of \$35.00.
4. FIREARMS MUST BE SHIPPED UNLOADED. Double check the chambers of your firearm before shipping. If firearms are sent to Heritage in a loaded condition, we are required by law to notify the Federal authorities.
5. DO NOT include telescopic sights, custom grips, holsters, or other accessories with any firearm shipped to us.

## PARTS

Firearms require periodic maintenance, inspection, adjustment and repair. If your rifle has a malfunction, be safe. Stop firing, “clear” and unload the rifle and take it to a qualified gunsmith. Before shooting it again, contact our Customer Care department if you have any questions.

If water, sand, or other foreign matter gets in your rifle, thoroughly clean it. Failure to keep your firearm clean and in proper working order can be dangerous.

Our Customer Care department maintains a full stock of replacement parts for current Heritage firearms. Even though most gunsmiths have the knowledge, training and ability to make the necessary repairs to your firearm, the skill and workmanship of any particular gunsmith is totally beyond our control. Should your firearm require service, return it to our Customer Care department. Please refer to Heritage Manufacturing, Inc. Service Policy on the [HeritageMfg.com](http://HeritageMfg.com) website for information on the policy and shipping, or call 229-210-2666 or 800-845-3776.

Remember, unauthorized adjustments or parts replacement can void your warranty. If you choose to have someone else do the required work, the purchaser and/or installer of parts must accept full responsibility for the correct adjustment and function of the firearm.

## LIMITED WARRANTY

Heritage 92 Rifle.

Heritage Manufacturing, Inc. hereby provides the following **ONE-YEAR LIMITED WARRANTY** to the original retail purchaser of the enclosed Heritage 92.

### What does the warranty cover and what is its duration?

Heritage Manufacturing, Inc. warrants that the enclosed 92 Rifle was made free of defects in material, function, and workmanship. For one (1) year after the date of purchase by the original owner, Heritage Manufacturing, Inc. will remedy any defect in material, function, or workmanship within a reasonable time after written notification and delivery of the firearm. Further, if Heritage Manufacturing, Inc. cannot remedy any such defects after a reasonable number of attempts, Heritage Manufacturing, Inc. will replace the 92 with the exact or comparable model.

This warranty terminates automatically upon the transfer of the 92 Rifle to any individual or entity other than the original retail purchaser.

### How do you obtain warranty service?

Contact Heritage Manufacturing, Inc. in writing to receive warranty service. You may contact Heritage Manufacturing, Inc. by logging onto [www.HeritageMfg.com](http://www.HeritageMfg.com), or in writing: Heritage Manufacturing, Inc., Attn: Warranty Service, 100 Taurus Way, Bainbridge, GA 39817. Please include a description of the claimed issue, along with your name, address, telephone number, proof of purchase or a copy of the ATF Form 4473, product model, serial number, and date of purchase.

Upon receiving your correspondence, Heritage Manufacturing, Inc. will provide instructions regarding your return of the 92. Heritage Manufacturing, Inc.'s obligations under this warranty shall not apply if any law, regulation, or governmental requirement prohibits the repair, replacement, or return to the individual who shipped the Heritage 92 to Heritage Manufacturing, Inc.

### Disclaimer and Limitation of Remedy.

**ANY IMPLIED WARRANTIES OF MERCHANTABILITY IMPARTED BY STATE LAW WILL BE LIMITED TO ONE (1) YEAR.** Under NO CIRCUMSTANCES shall Heritage Manufacturing, Inc. be responsible for incidental or consequential damages with respect to economic loss, injury, death or property damage, whether as a result of breach of this warranty, negligence or otherwise.

Some states do not allow limitations on how long an implied warranty lasts, so the above-limitation may not apply to you.

**ANY AND ALL INCIDENTAL AND CONSEQUENTIAL DAMAGES ARE EXPRESSLY DISCLAIMED UNDER ALL CIRCUMSTANCES.**

Some states do not allow the exclusion or limitation of incidental or consequential damages, so the above limitation or exclusion may not apply to you. This ONE-YEAR LIMITED WARRANTY gives you specific legal rights, and you may also have other rights which vary from state to state.

Heritage Manufacturing, Inc. will not be responsible for:

- 1) Defects or malfunctions resulting from careless handling, unauthorized adjustments or modifications made or attempted by anyone other than a qualified gunsmith following Heritage Manufacturing, Inc. authorized procedures, or failure to follow the disassembly instructions in the Heritage Manufacturing, Inc. manual.
- 2) Use of defective or improper ammunition, reloaded ammunition, corrosion, neglect, abuse, ordinary wear and tear, or unreasonable use.
- 3) Criminal misuse, negligence or use under the influence of drugs or alcohol.

This is the only Warranty extended by Heritage Manufacturing, Inc. covering the 92 models.

# IMPORTANT DO NOT DISCARD

KEEP THIS MANUAL WITH THE FIREARM UPON CHANGE OF OWNERSHIP.



## HERITAGE MANUFACTURING, INC.

100 Taurus Way  
Bainbridge, GA 39817  
Telephone: 229-515-8099

**HERITAGEMFG.COM**

045-0050-00